



# AT THE ART MUSEUM



# AGREE OR DISAGREE

Read and discuss the statements about art. Choose a number from 1 to 5 to show the level of your agreement.



Modern art requires no skill, and anyone can create it.

1

2

3

4

5

Art education should be mandatory in schools, as it fosters creativity and critical thinking.

1

2

3

4

5

Beauty in art is subjective; what one person finds beautiful, another may find unappealing.

1

2

3

4

5

The value of a painting is determined by the skill and effort put into it.

1

2

3

4

5

Skillful technique is more important than the concept behind the artwork.

1

2

3

4

5

Investing in art is more about status and financial gain than an appreciation of the artwork itself.

1

2

3

4

5

# AT THE ART GALLERY

1. Match the pictures below with the words.

sculpture

portrait

artist

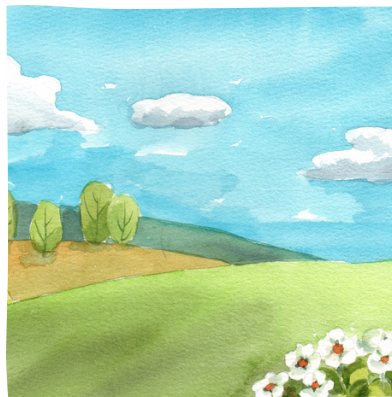
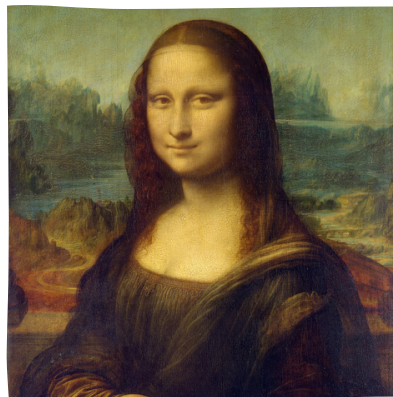
etching

oil painting

watercolour

pottery

still-life



2. Read the dialogue and complete the gaps with the appropriate words.

Change the form if needed.

**Sophie:** Hey, Alex! Have you been to this art gallery before?

**Alex:** No, Sophie, it's my first time here. I heard they have a new exhibition.

**Sophie:** That's right! The exhibition features various types of art, like paintings and \_\_\_\_\_. Look at that beautiful oil painting over there.

**Alex:** Wow, it's amazing! And check out that sculpture next to it. I love how detailed it is.

**Sophie:** Definitely! Oh, and don't miss the \_\_\_\_\_ paintings on the other side. They're so colourfull and full of life.

**Alex:** True, I've always admired such techniques. But what's that on the wall? Is it an \_\_\_\_\_?

**Sophie:** Yes, it is! It's a technique where artists create designs on metal plates. They're then printed onto paper.

**Alex:** That sounds complicated, but it looks really unique. Oh, look! There's a whole section dedicated to portraits and \_\_\_\_\_ paintings.

**Sophie:** I like \_\_\_\_\_ very much. Each one seems to capture the personality of the subject. And the still-life paintings showcase everyday objects in such an interesting way.

**Alex:** Agreed, the artists' skills are truly impressive. Speaking of \_\_\_\_\_, have you ever tried pottery? I heard there's a \_\_\_\_\_ workshop here too.

**Sophie:** No, I haven't, but it sounds like a fun experience. I'd love to give it a try.

**Alex:** Sounds like a plan, Sophie. Let's go!

# ANSWERS

1. Match the pictures below with the words.



artist



sculpture



still-life



etching



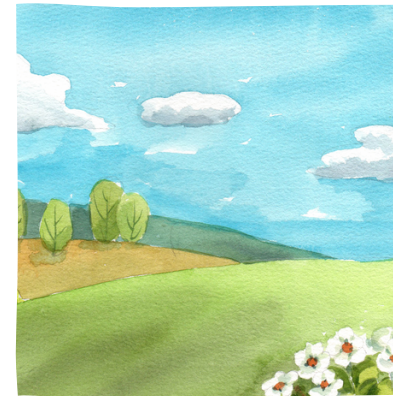
oil painting



portrait



pottery



watercolour

2. Read the dialogue and complete the gaps with the appropriate words. Change the form if needed.

**Sophie:** Hey, Alex! Have you been to this art gallery before?

**Alex:** No, Sophie, it's my first time here. I heard they have a new exhibition.

**Sophie:** That's right! The exhibition features various types of art, like paintings and sculptures. Look at that beautiful oil painting over there.

**Alex:** Wow, it's amazing! And check out that sculpture next to it. I love how detailed it is.

**Sophie:** Definitely! Oh, and don't miss the watercolour paintings on the other side. They're so colourful and full of life.

**Alex:** True, I've always admired such techniques. But what's that on the wall? Is it an etching?

**Sophie:** Yes, it is! It's a technique where artists create designs on metal plates. They're then printed onto paper.

**Alex:** That sounds complicated, but it looks really unique. Oh, look! There's a whole section dedicated to portraits and still-life paintings.

**Sophie:** I like portraits very much. Each one seems to capture the personality of the subject. And the still-life paintings showcase everyday objects in such an interesting way.

**Alex:** Agreed, the artists' skills are truly impressive. Speaking of artists, have you ever tried pottery? I heard there's a pottery workshop here too.

**Sophie:** No, I haven't, but it sounds like a fun experience. I'd love to give it a try.

**Alex:** Sounds like a plan, Sophie. Let's go!

# VOCABULARY

Look at the words below. Which ones do you know? Which ones are new for you? Go to the next slide to complete the tasks.

contrast

perspective

symmetry

proportion

background

monochrome

foreground

balance

focal point

textured

serene

delicate

chaotic

abstract

busy

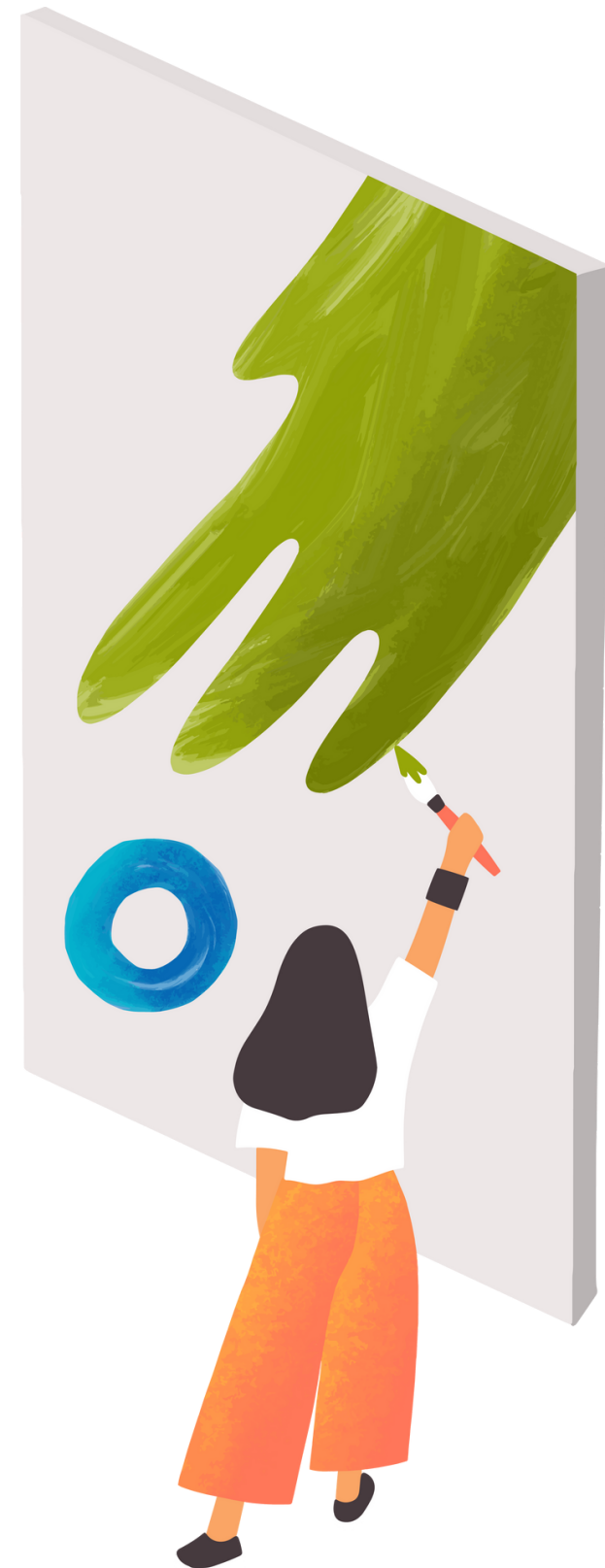
vibrant

bold

colourful

realistic

gloomy



# VOCABULARY



Read the sentences and choose the correct definition of the highlighted word.

- The **gloomy** landscape makes the viewer feel a sense of melancholy.
  - Full of energy and life
  - Dark, dreary, and sad
  - Prominent and eye-catching
- Her **vibrant** use of colour makes the portrait come alive.
  - Full of energy and life
  - Dark, dreary, and sad
  - Prominent and eye-catching
- The **bold** lines make the image stand out.
  - Full of energy and life
  - Dark, dreary, and sad
  - Prominent and eye-catching
- The **serene** landscape conveys a feeling of peace and tranquility.
  - Full of energy and life
  - Dark, dreary, and sad
  - Peaceful and calm
- The **monochrome** palette of black and white creates a moody atmosphere.
  - Full of various colours
  - Dark, dreary, and sad
  - Having a single colour or shades of a single colour
- The **textured** surface adds a tactile dimension to the sculpture.
  - Full of energy and life
  - Dark, dreary, and sad
  - Having a distinct surface pattern or feel
- The children in the **foreground** bring life to the scene.
  - The part of a scene that is farthest away
  - The main focus of the scene
  - The part of a scene closest to the viewer
- The **perspective** in this painting makes the road seem to stretch into infinity.
  - The point where all lines meet in a painting
  - The angle from which something is viewed
  - The main focus of the painting
- The bright red door serves as the **focal point** of the painting.
  - The point where all lines meet in a painting
  - The main focus of the painting
  - The point in the distance where the painting ends
- The mountains in the **background** provide a beautiful backdrop.
  - The part of a scene closest to the viewer
  - The main focus of the scene
  - The part of a scene that is farthest away

# ANSWERS



Read the sentences and choose the correct definition of the highlighted word.

- The **gloomy** landscape makes the viewer feel a sense of melancholy.
  - Full of energy and life
  - Dark, dreary, and sad**
  - Prominent and eye-catching
- Her **vibrant** use of colour makes the portrait come alive.
  - Full of energy and life**
  - Dark, dreary, and sad
  - Prominent and eye-catching
- The **bold** lines make the image stand out.
  - Full of energy and life
  - Dark, dreary, and sad
  - Prominent and eye-catching**
- The **serene** landscape conveys a feeling of peace and tranquility.
  - Full of energy and life
  - Dark, dreary, and sad
  - Peaceful and calm**
- The **monochrome** palette of black and white creates a moody atmosphere.
  - Full of various colours
  - Dark, dreary, and sad
  - Having a single colour or shades of a single colour**
- The **textured** surface adds a tactile dimension to the sculpture.
  - Full of energy and life
  - Dark, dreary, and sad
  - Having a distinct surface pattern or feel**
- The children in the **foreground** bring life to the scene.
  - The part of a scene that is farthest away
  - The main focus of the scene
  - The part of a scene closest to the viewer**
- The **perspective** in this painting makes the road seem to stretch into infinity.
  - The point where all lines meet in a painting
  - The angle from which something is viewed**
  - The main focus of the painting
- The bright red door serves as the **focal point** of the painting.
  - The point where all lines meet in a painting
  - The main focus of the painting**
  - The point in the distance where the painting ends
- The mountains in the **background** provide a beautiful backdrop.
  - The part of a scene closest to the viewer
  - The main focus of the scene
  - The part of a scene that is farthest away**

# LET'S PRACTICE

Read and match the sentence halves.

1. Walking into the gallery, I was immediately drawn to

2. The artist's use of colour and shading creates a unique perspective,

3. The foreground of this artwork depicts a rustic village scene,

4. The Eiffel Tower rises elegantly against the Parisian skyline,

5. The painting depicted a gloomy landscape

6. In this artwork, the artist has employed a striking monochrome palette,

7. The masterful play of light and shadow in the painting

a) by using shades of blue to bring out the intricate play of light and shadow.

b) becoming the unmistakable focal point of the painting.

c) a captivating painting with a vibrant display of reds, blues, and yellows.

d) added depth to the serene forest scene.

e) with dark, stormy clouds hanging heavily in the sky.

f) which makes the subjects appear three-dimensional and lifelike.

g) while a majestic mountain range forms the background.





# ANSWERS

1.C, 2.F, 3.G, 4.B, 5.E, 6.A, 7.D

1.Walking into the gallery, I was immediately drawn to

2.The artist's use of colour and shading creates a unique perspective,

3.The foreground of this artwork depicts a rustic village scene,

4.The Eiffel Tower rises elegantly against the Parisian skyline,

5.The painting depicted a gloomy landscape

6.In this artwork, the artist has employed a striking monochrome palette,

7.The masterful play of light and shadow in the painting

c)a captivating painting with a vibrant display of reds, blues, and yellows.

f)which makes the subjects appear three-dimensional and lifelike.

g)while a majestic mountain range forms the background.

b) becoming the unmistakable focal point of the painting.

e)with dark, stormy clouds hanging heavily in the sky.

a)by using shades of blue to bring out the intricate play of light and shadow.

d) added depth to the serene forest scene.



# VOCABULARY

Complete the sentences with the words on the left.

gloomy

vibrant

bold

serene

monochrome

textured

foreground

perspective

focal point

background



1. The painting's \_\_\_\_\_ is the beautiful tree in the center, drawing the viewer's eye immediately.
2. In the \_\_\_\_\_ of the painting, you can see distant mountains, which add depth to the landscape.
3. The artist used a \_\_\_\_\_ colour scheme, with different shades of grey creating a moody atmosphere.
4. By using strong, \_\_\_\_\_ brush strokes, the artist conveyed a sense of confidence and energy in the portrait.
5. The \_\_\_\_\_ in the painting is filled with lively flowers and bright colors, contrasting with the softer background.
6. The \_\_\_\_\_ sky in the artwork evokes a feeling of melancholy and adds to the mysterious tone of the scene.
7. The artist's unique \_\_\_\_\_ allows viewers to see the scene from an unusual angle, making the painting intriguing and original.
8. With its \_\_\_\_\_ surface, you can actually feel the ridges and bumps on the canvas, making it a truly tactile experience.
9. The painting has a \_\_\_\_\_ quality, with calm waters and gentle skies that bring a sense of peace to the viewer.
10. The use of \_\_\_\_\_ colours in the still life brings the fruit and flowers to life, making them almost seem to dance on the canvas.

# ANSWERS

Complete the sentences with the words on the left.

gloomy

vibrant

bold

serene

monochrome

textured

foreground

perspective

focal point

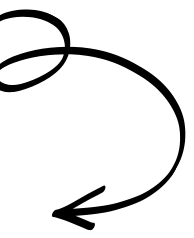
background

1. The painting's **focal point** is the beautiful tree in the center, drawing the viewer's eye immediately.
2. In the **background** of the painting, you can see distant mountains, which add depth to the landscape.
3. The artist used a **monochrome** colour scheme, with different shades of grey creating a moody atmosphere.
4. By using strong, **bold** brush strokes, the artist conveyed a sense of confidence and energy in the portrait.
5. The **foreground** in the painting is filled with lively flowers and bright colors, contrasting with the softer background.
6. The **gloomy** sky in the artwork evokes a feeling of melancholy and adds to the mysterious tone of the scene.
7. The artist's unique **perspective** allows viewers to see the scene from an unusual angle, making the painting intriguing and original.
8. With its **textured** surface, you can actually feel the ridges and bumps on the canvas, making it a truly tactile experience.
9. The painting has a **serene** quality, with calm waters and gentle skies that bring a sense of peace to the viewer.
10. The use of **vibrant** colours in the still life brings the fruit and flowers to life, making them almost seem to dance on the canvas.



# DESCRIBE THE PAINTING

*Create sentences about the painting with the words/phrases below.*



'Guardian' by Melissa Cooper

background

foreground

balance

focal point

monochrome

textured

serene

chaotic

busy

bold

abstract

delicate

vibrant

realistic

colourful

gloomy

# DESCRIBE THE PAINTING

*Create sentences about the painting with the words/phrases below.*



'Picasso's Meninas' by Richard Hamilton

background

foreground

balance

focal point

monochrome

textured

serene

chaotic

busy

bold

abstract

delicate

vibrant

realistic

colourful

gloomy

# DESCRIBE THE PAINTING

*Create sentences about the painting with the words/phrases below.*



'Land And Seascape' by Justin Gaffrey

background

foreground

balance

focal point

monochrome

textured

serene

chaotic

busy

bold

abstract

delicate

vibrant

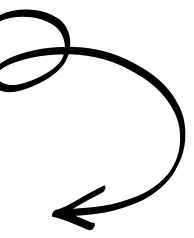
realistic

colourful

gloomy

# DESCRIBE THE PAINTING

*Create sentences about the painting with the words/phrases below.*



'Let the Waters Flow and Dry Ground Appear' by Valerie Ramos

background

foreground

balance

focal point

monochrome

textured

serene

chaotic

busy

bold

abstract

delicate

vibrant

realistic

colourful

gloomy

# DESCRIBE THE PAINTING

*Create sentences about the painting with the words/phrases below.*



'ColorFish: Braided Beauty' by J. Vincent Scarpace

background

foreground

balance

focal point

monochrome

textured

serene

chaotic

busy

bold

abstract

delicate

vibrant

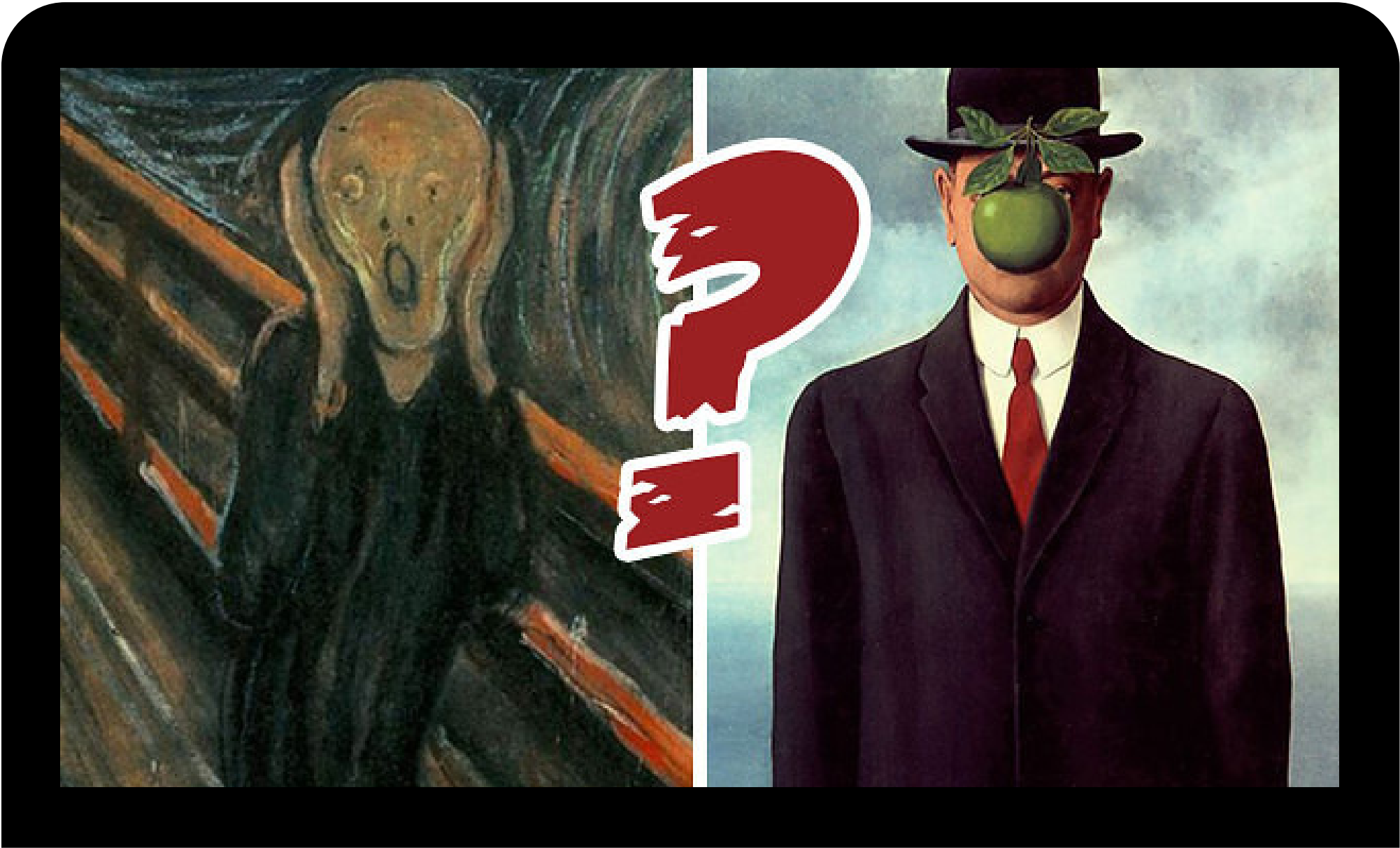
realistic

colourful

gloomy



# CAN YOU SPOT THE REAL ART?



**PLAY NOW**



*Take a fun quiz. Your task is to choose between the real painting and the very similar imposter.*



# WORKS OF ART

Look through the pictures and match the paintings with the artists and styles of art.

pop art

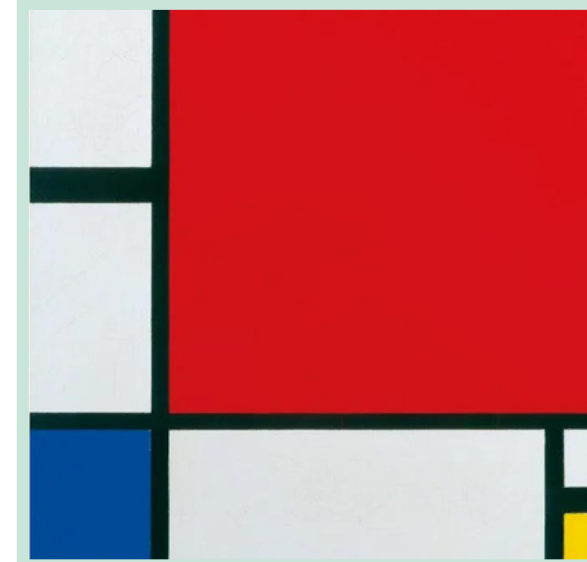
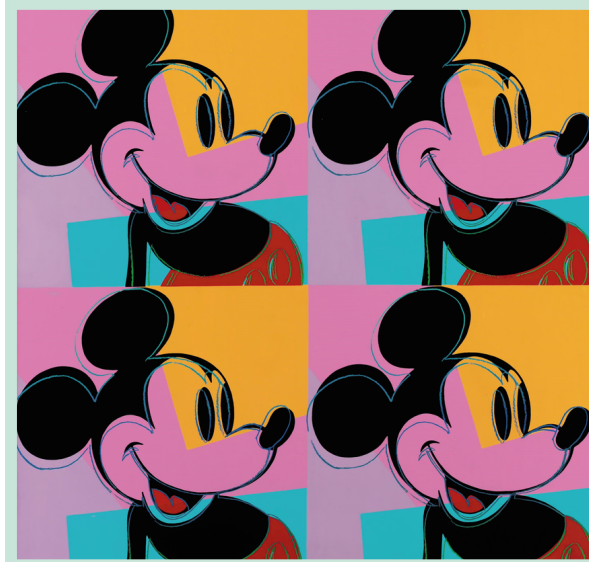
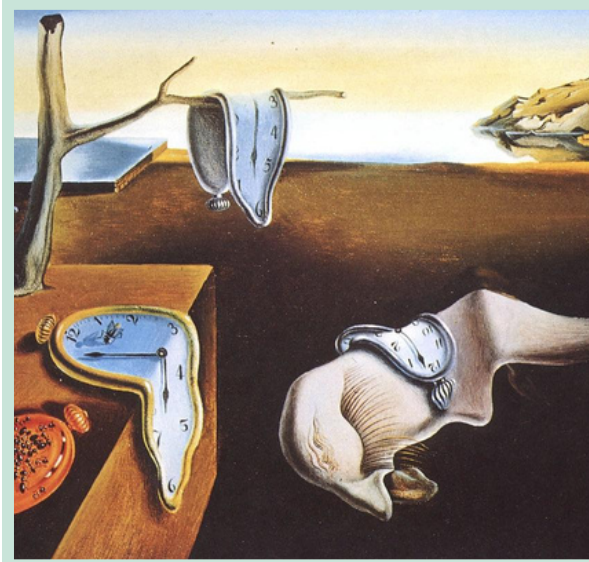
realism

surrealism

abstract

impressionism

expressionism



Claude Monet

James McNeill Whistler

Van Gogh

Piet Mondrian

Salvador Dali

Andy Warhol

# ANSWERS

Look through the pictures and match the paintings with the artists and styles of art.

realism

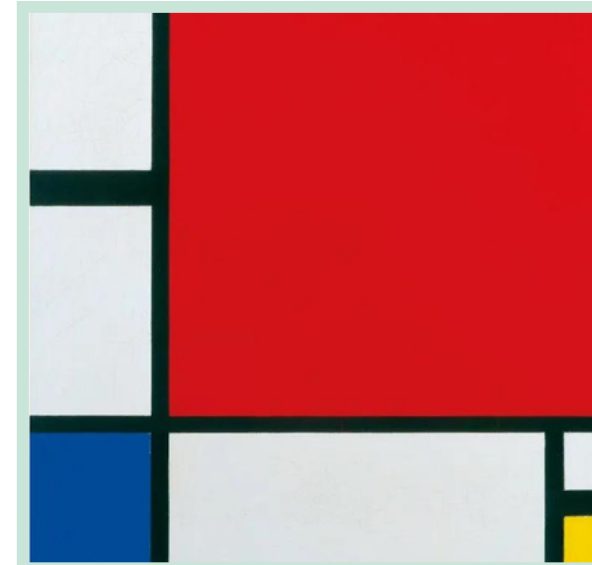
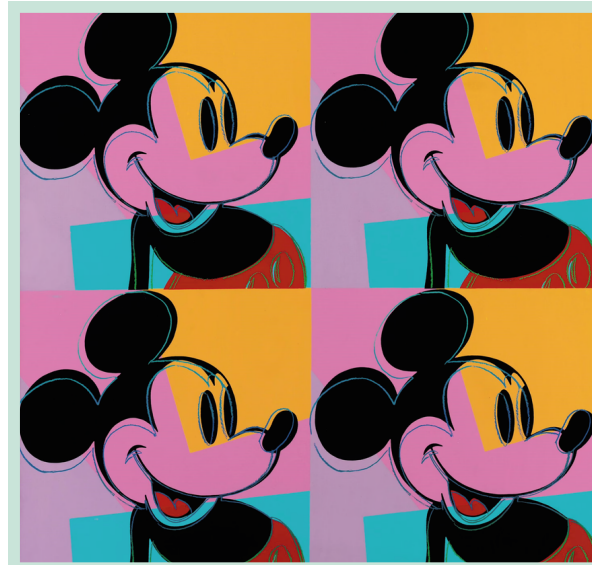
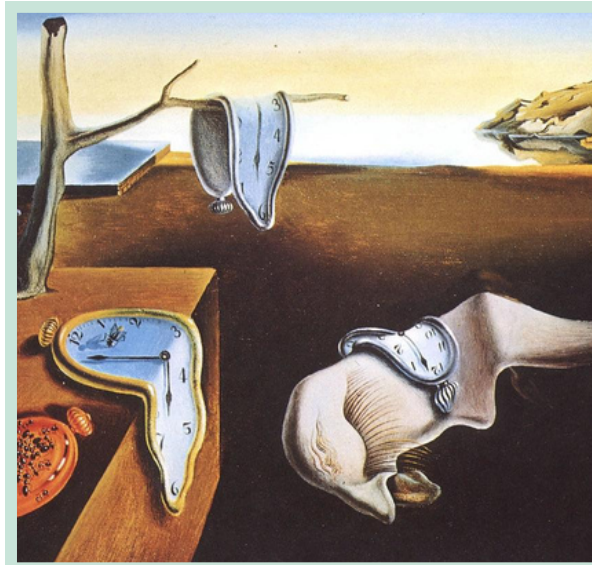
surrealism

pop art

expressionism

abstract

impressionism



James McNeill Whistler

Salvador Dali

Andy Warhol

Van Gogh

Piet Mondrian

Claude Monet

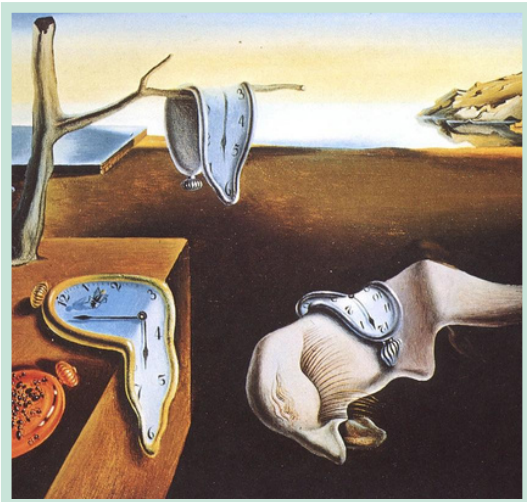


# WORKS OF ART

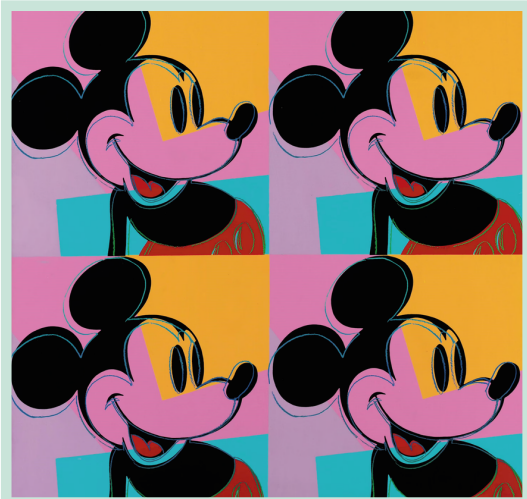
Read the short reviews of the paintings you've matched. Did you guess? Pay attention to the underlined phrases and complete the tasks after the reviews.



James McNeill Whistler was a realist artist who interpreted realism through his unique style, focusing on mood and atmosphere. His painting "Whistler's Mother" exemplifies his ability to capture the essence of his subjects while maintaining a strong emphasis on aesthetics.



"The Persistence of Memory" is a surrealist painting created by Spanish artist Salvador Dalí in 1931. It is one of his most famous works and is often interpreted as a representation of the fluid nature of time and reality. The painting features a dream-like landscape with melting and distorted objects set against a barren background.



Andy Warhol, a renowned American artist and leading figure of the Pop Art movement, often included iconic and familiar imagery from popular culture in his artwork. One of his most famous subjects was Mickey Mouse, the beloved Disney character. The artist seems to be conveying his exploration of consumerism, mass production, and the intersection of art and commerce.



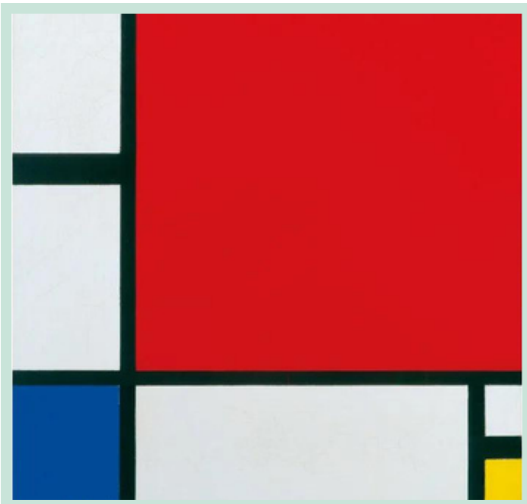


# WORKS OF ART

Read the short reviews of the paintings you've matched. Did you guess? Pay attention to the underlined phrases and complete the tasks after the reviews.



"Starry Night" by Vincent van Gogh is a quintessential masterpiece of Expressionism, encapsulating the artist's unique style and emotional depth. This piece is reminiscent of Van Gogh's swirling style. The scene appears to vibrate with energy and emotion, reflecting van Gogh's connection to the natural world.



"Piet Mondrian's abstract composition, titled 'Composition C (No. III) with Red, Yellow and Blue,' is a mesmerising exploration of colour, geometry, and balance. Created during the De Stijl movement, Mondrian's work represents the movement's core principles of simplicity, harmony, and a reduction to essential elements.



"Impressionist The Water Lily Pond" is a testament to Claud Monet's ability to convey the play of light on water and the interplay between reflections and reality. The shimmering surface of the pond, the delicate intermingling of colours, and the absence of distinct forms challenge traditional notions of representation, emphasising the viewer's sensory experience over precision.





# LET'S PRACTICE!

Read the following short reviews of different paintings. Replace the underlined phrases with the ones listed below, ensuring that the meaning of the sentence stays the same. Use each phrase from the list only once. Make necessary changes.

exemplify

interplay

mesmerising exploration

piece is reminiscent

quintessential masterpiece

intermingling

represent

seems to be conveying

painting features

interpreted through

1. The abstract painting's emotions were beautifully conveyed via a vibrant dance of colours and flowing brushstrokes.
2. The artwork showcases the artist's mastery of colour and emotion, creating a captivating visual narrative.
3. In the gallery, the vibrant colours of the paintings created an atmosphere of blending emotions and perspectives.
4. The interaction of colours and textures in the painting created a captivating sense of depth and movement.
5. The artist appears to be expressing a sense of melancholy through the somber colour palette and delicate brushstrokes in the painting.
6. The abstract painting depicts a vibrant dance of colours and emotions.
7. The artist's meticulous attention to detail and profound creativity resulted in a definite artwork that captivated all who beheld it.
8. The artist's enchanting journey through colours and textures crafted a captivating visual symphony.
9. This artwork evokes memories of a dreamy, ethereal landscape painted with delicate brushstrokes.
10. The intricate brushwork and vibrant colours in the painting illustrate the artist's mastery of capturing emotion on canvas.



# POSSIBLE ANSWERS

Read the following short reviews of different paintings. Replace the underlined phrases with the ones listed below, ensuring that the meaning of the sentence stays the same. Use each phrase from the list only once. Make necessary changes.

exemplify

interplay

mesmerising exploration

piece is reminiscent

quintessential masterpiece

intermingling

represent

seems to be conveying

painting features

interpreted through

1. The abstract painting's emotions were beautifully **interpreted through** a vibrant dance of colours and flowing brushstrokes.
2. The **painting features** the artist's mastery of colour and emotion, creating a captivating visual narrative.
3. In the gallery, the vibrant colours of the paintings created an atmosphere of **intermingling** emotions and perspectives.
4. The **interplay** of colours and textures in the painting created a captivating sense of depth and movement.
5. The artist **seems to be conveying** a sense of melancholy through the somber colour palette and delicate brushstrokes in the painting.
6. The abstract painting **represents** a vibrant dance of colours and emotions.
7. The artist's meticulous attention to detail and profound creativity resulted in a **quintessential masterpiece** that captivated all who beheld it.
8. The artist's **mesmerising exploration** of colours and textures created a captivating visual symphony.
9. This **piece is reminiscent** of a dreamy, ethereal landscape painted with delicate brushstrokes.
10. The intricate brushwork and vibrant colours in the painting **exemplify** the artist's mastery of capturing emotion on canvas.





# EXTRA PRACTICE!

Look at the picture and describe the painting using today's vocabulary.

A light green rounded rectangular area containing ten horizontal white lines for writing.

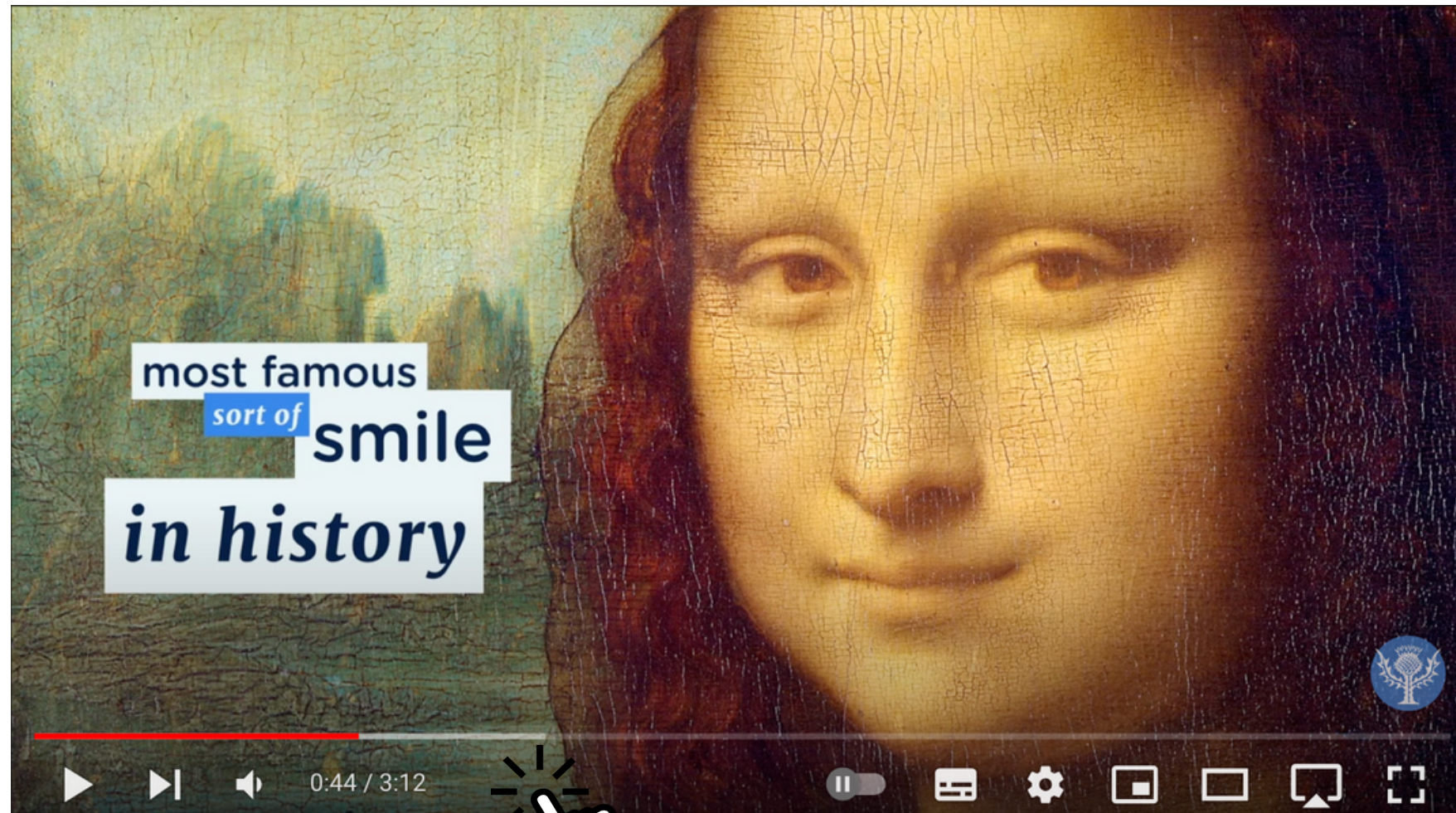




# MONA LISA MYSTIQUE

Discuss the questions below. Then, watch the video and answer the questions on the right.

- Have you ever seen the Mona Lisa in person?
- Why do you think the Mona Lisa is so famous?
- Have you heard anything about its history?

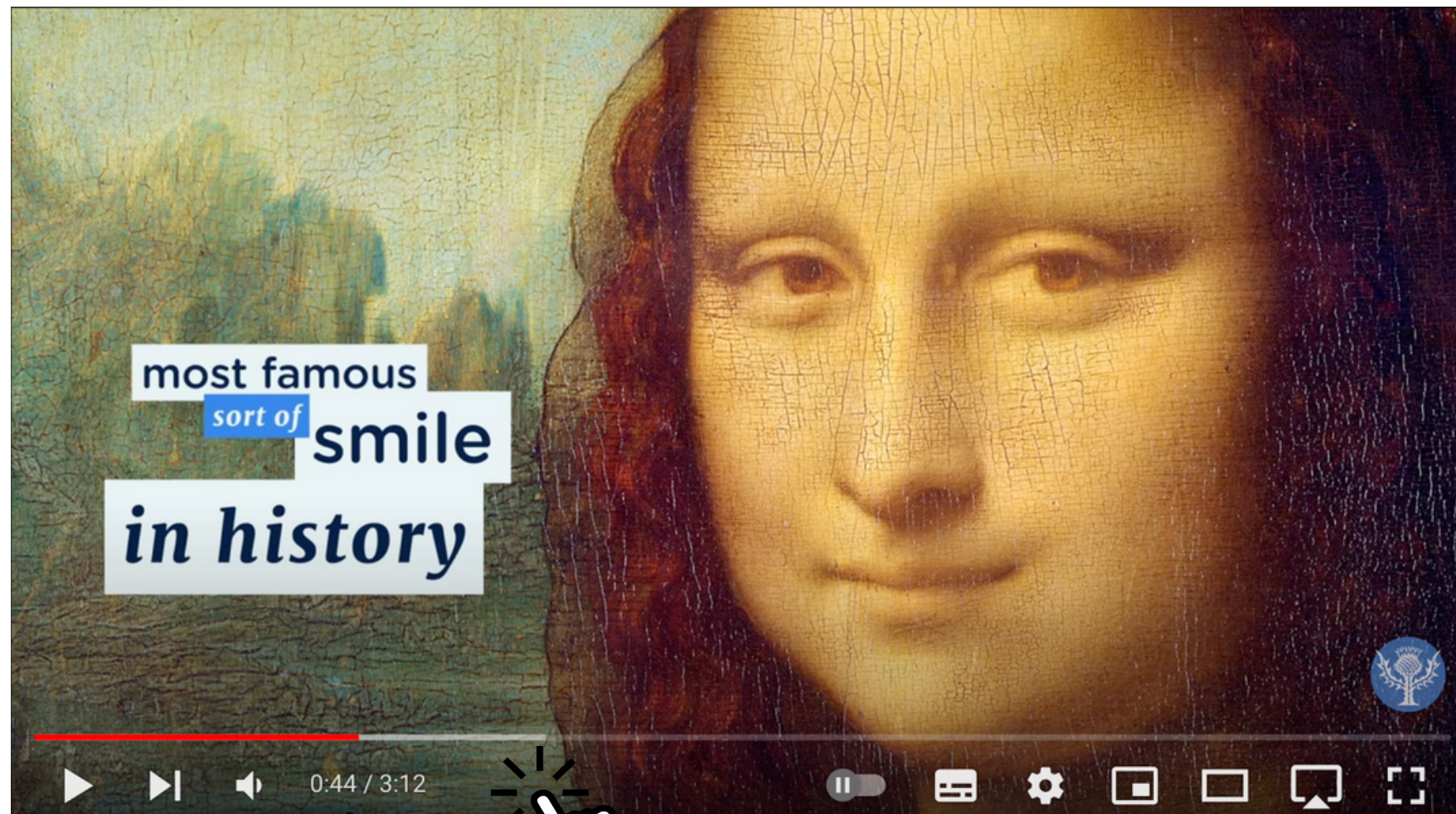


1. Who painted the Mona Lisa and when was it painted?
2. Where is the Mona Lisa currently housed and why is it so well-protected?
3. How did the Mona Lisa become a universal symbol of great art?
4. What were some exaggerated claims made about Leonardo da Vinci during the 19th century?
5. Who is thought to be the model for the Mona Lisa and why is there doubt about her identity?
6. What happened to the Mona Lisa in 1911 and how did it affect its fame?
7. When did the Mona Lisa become a universally recognized figure?
8. Why is the Mona Lisa so well-visited today?

# ANSWERS

Discuss the questions below. Then, watch the video and answer the questions on the right.

- Have you ever seen the Mona Lisa in person?
- Why do you think the Mona Lisa is so famous?
- Have you heard anything about its history?



1. The Mona Lisa was painted by Leonardo da Vinci between 1503 and 1519.
2. The Mona Lisa is currently housed in the Louvre in Paris behind bulletproof glass because it has been stolen before and is considered priceless.
3. The Mona Lisa became a universal symbol of great art during the 19th century due to increased interest in the Renaissance.
4. During the 19th century, some exaggerated claims were made about Leonardo da Vinci's scientific achievements and the identity of the Mona Lisa's model.
5. The Mona Lisa is thought to be Lisa del Giocondo, the wife of a wealthy Florentine merchant, but the lack of commission from her husband has raised doubts about her identity.
6. In 1911, the Mona Lisa was stolen by an employee of the Louvre and two accomplices, and it was missing for two years. The story of the theft increased the painting's fame.
7. The Mona Lisa became a universally recognized figure by the second half of the 20th century when it toured the United States and Japan.
8. The Mona Lisa is well-visited today because it is considered an icon of the art world and is housed in the famous Louvre museum.



# QUIZLET



*Revise the words for the next lesson. Use this Quizlet set. You can also play different games to practice or even test yourself in the Quizlet app or on the site.*



**THANK YOU!**

