

Back to school, Units 1, 2 and 3

Name: Class:

1 Match the questions with the answers.

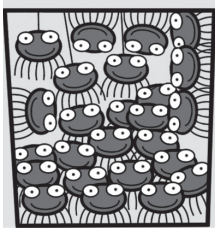
Mark /5

- | | |
|---------------------------------|---------------------------|
| 1 What's the time? | a At one o'clock. |
| 2 When do you have lunch? | b Yes, she does. |
| 3 Does Eddie like tigers? | c Yes, it has. |
| 4 Has your town got a café? | d No he doesn't. |
| 5 Does Jeanne like spiders? | e No, he sleeps in a bed. |
| 6 Does Charlie sleep in a tree? | f It's four o'clock. |

2 Write the words.

Mark /5

gets up are Don't open Sit down doesn't like in front of



- 1 There are _____
forty spiders in
the box.



- 2 _____ ,
please.



- 3 _____
your books,
please.



- 4 Benny

at seven o'clock.



- 5 Ben

bananas.



- 6 The tree is

the hospital.

Review
1

Back to school, Units 1, 2 and 3

Name: Class:

3 Look and circle the word.

Mark /5

1



bookcase /
cupboard

2



wall / floor

3

30

thirty /
thirteen

4



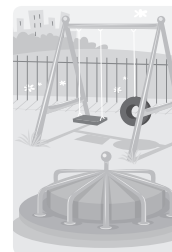
have dinner /
breakfast

5



hippo /
crocodile

6



park /
playground

4 Read and write the words in the correct column.

Mark /5

snake bus stop zebra brush my teeth seventy street
train station eighty ~~get up~~ parrot have breakfast

My day	Where we live	Numbers	The zoo
get up			

Total test mark /20